

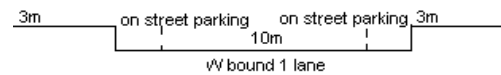
YEAR 2022

COVERAGE (B) STATION 4403

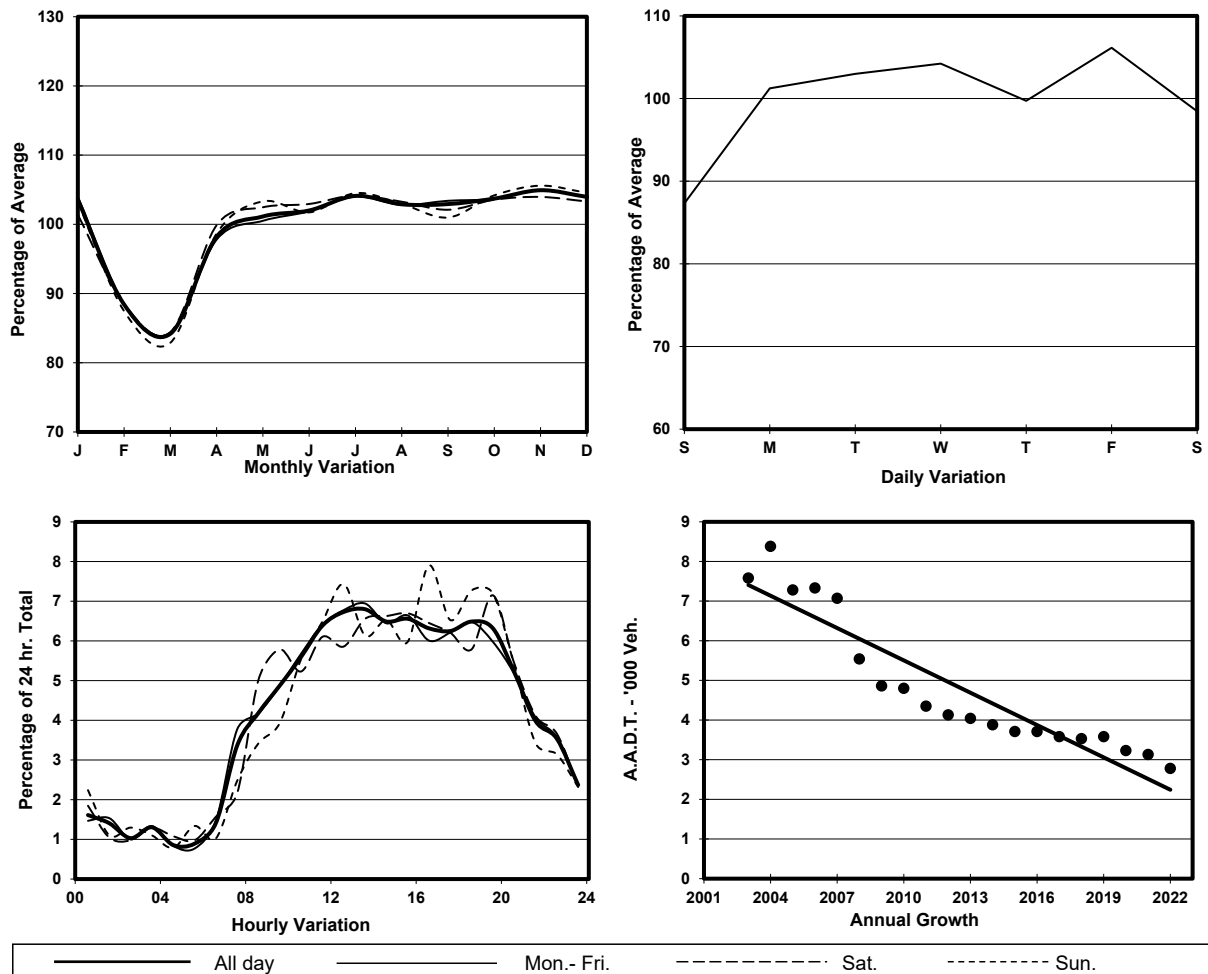
ROAD NETWORK MINOR

ROAD TYPE LOCAL DISTRIBUTOR

LINK SOY ST (from SAI YEUNG CHOI ST S to YIM PO FONG ST)



1. TRAFFIC FLOW VARIATION AND GROWTH



2. TRAFFIC CHARACTERISTICS (BY DIRECTION)

Parameter	All - Day	Mon. - Fri.	Sat.	Sun.
WEST BOUND				
A.A.D.T.	2780	2880	2760	2440
R 12 / 24 - %	70.1	70.4	68.5	69.6
R 16 / 24 - %	89.1	89.2	88.9	88.8
AM Peak Hour	0900-1000	0900-1000	0900-1000	0900-1000
One-way flow at AM peak hour	140	140	160	100
T - % (AM)	-	-	-	-
PM Peak Hour	1800-1900	1800-1900	1600-1700	1600-1700
One-way flow at PM peak hour	180	190	180	190
T - % (PM)	-	-	-	-
Prop.of commercial vehicles - 16 hr.	-	1.2	-	-
A.A.D.T.	-	-	-	-
R 12 / 24 - %	-	-	-	-
R 16 / 24 - %	-	-	-	-
AM Peak Hour	-	-	-	-
One-way flow at AM peak hour	-	-	-	-
T - % (AM)	-	-	-	-
PM Peak Hour	-	-	-	-
One-way flow at PM peak hour	-	-	-	-
T - % (PM)	-	-	-	-
Prop.of commercial vehicles - 16 hr.	-	-	-	-

3. OTHER INFORMATION AND COMMENT

4. Vehicle classification and occupancy - Monday to Friday

Time		Class of vehicle									
		Motor Cycle	Private Car	Taxi	Private LB	PLB	Goods veh.		Non Fr. Bus	Fr. Bus	
							Light	M & H		SD	DD
0700-0800	Pro	10.0	23.3	23.3	10.0	10.0	16.7	0.0	6.7	0.0	0.0
	Ocp	1.0	2.6	1.6	11.0	3.3	1.0	0.0	16.5	0.0	0.0
0800-0900	Pro	0.0	57.4	17.0	6.4	2.1	14.9	2.1	0.0	0.0	0.0
	Ocp	0.0	1.4	1.1	6.3	4.0	1.3	1.0	0.0	0.0	0.0
0900-1000	Pro	16.0	20.0	44.0	0.0	8.0	12.0	0.0	0.0	0.0	0.0
	Ocp	1.0	1.4	1.2	0.0	5.0	1.0	0.0	0.0	0.0	0.0
1000-1100	Pro	5.9	32.4	44.1	0.0	5.9	11.8	0.0	0.0	0.0	0.0
	Ocp	1.0	1.2	1.3	0.0	3.5	1.3	0.0	0.0	0.0	0.0
1100-1200	Pro	11.1	24.4	44.4	0.0	6.7	13.3	0.0	0.0	0.0	0.0
	Ocp	1.0	1.9	1.4	0.0	9.7	1.8	0.0	0.0	0.0	0.0
1200-1300	Pro	7.0	52.6	22.8	0.0	3.5	12.3	0.0	1.8	0.0	0.0
	Ocp	1.3	1.4	1.2	0.0	7.0	1.1	0.0	1.0	0.0	0.0
1300-1400 Peak hour	Pro	10.9	30.4	41.3	4.3	6.5	6.5	0.0	0.0	0.0	0.0
	Ocp	1.0	1.5	1.5	6.0	7.7	1.3	0.0	0.0	0.0	0.0
1400-1500	Pro	16.7	35.7	26.2	0.0	2.4	16.7	0.0	2.4	0.0	0.0
	Ocp	1.1	1.6	1.6	0.0	7.0	1.4	0.0	1.0	0.0	0.0
1500-1600	Pro	12.5	25.0	33.3	0.0	4.2	25.0	0.0	0.0	0.0	0.0
	Ocp	1.0	1.4	1.5	0.0	5.5	1.5	0.0	0.0	0.0	0.0
1600-1700	Pro	7.9	47.4	10.5	0.0	0.0	28.9	5.3	0.0	0.0	0.0
	Ocp	1.0	1.4	1.8	0.0	0.0	1.5	1.0	0.0	0.0	0.0
1700-1800	Pro	15.8	47.4	15.8	2.6	2.6	13.2	2.6	0.0	0.0	0.0
	Ocp	1.0	1.4	1.8	1.0	10.0	1.0	1.0	0.0	0.0	0.0
1800-1900	Pro	17.0	64.4	6.8	0.0	3.4	8.5	0.0	0.0	0.0	0.0
	Ocp	1.1	1.7	2.0	0.0	7.0	1.4	0.0	0.0	0.0	0.0
1900-2000	Pro	17.0	52.8	24.5	0.0	1.9	3.8	0.0	0.0	0.0	0.0
	Ocp	1.1	1.4	1.7	0.0	14.0	1.5	0.0	0.0	0.0	0.0
2000-2100	Pro	0.0	51.3	38.5	2.6	2.6	5.1	0.0	0.0	0.0	0.0
	Ocp	0.0	1.6	1.1	1.0	7.0	1.5	0.0	0.0	0.0	0.0
2100-2200	Pro	6.9	55.2	31.0	0.0	3.4	3.4	0.0	0.0	0.0	0.0
	Ocp	1.0	1.6	1.4	0.0	3.0	1.0	0.0	0.0	0.0	0.0
2200-2300	Pro	18.9	48.6	27.0	0.0	2.7	2.7	0.0	0.0	0.0	0.0
	Ocp	1.0	1.8	1.5	0.0	2.0	1.0	0.0	0.0	0.0	0.0
16 hours	Pro	10.9	43.2	27.1	1.5	3.9	12.1	0.6	0.6	0.0	0.0
	Ocp	1.1	1.5	1.4	6.6	6.3	1.3	1.0	8.8	0.0	0.0

Legend: Pro. Proportion of vehicles in % (Sum may not add up to 100% due to figure rounding)*

Ocp. Average occupancy of vehicles including both driver and passengers*

M&H Medium and Heavy

* All traffic data are collected from combined bounds